

Expert Teams – Transplantation

Case-Based Learning & Mentorship

Thursday, April 21, 2022

Facilitator: Julie Moss, ESRD National Coordinating Center



Meeting Logistics

- Call is being recorded
- Lines will be open for all high performing organizations
 - Please stay on mute unless you are speaking
 - Do not place the call on “hold”
- Everyone is encouraged to use the video and chat features



Meeting Guidelines



INTRODUCE YOURSELF
BEFORE SPEAKING



KEEP PATIENT-SPECIFIC
INFORMATION
CONFIDENTIAL



BE WILLING TO SHARE
SUCSESSES AND
DIFFICULTIES



BE OPEN TO FEEDBACK



ASK THE DIFFICULT
QUESTIONS



RESPECT OTHERS



USE "...AND" STATEMENTS



KEEP TO TIME LIMITS

Introductions

- Meeting Focus – Transplantation
- Guest Expert –
 - Bonnie Lonze, MD, PhD, NYU Langone (NY)
- Case Study Presenter –
 - Laura Gonzalez, LCSW, NSW-C, Social Work Services Manager, Satellite Healthcare, Inc.
- High Performing Organizations
- ESRD Networks
- Centers for Medicare & Medicaid Services (CMS)



Questions to Run On



How Might We ...

- Educate differently to increase the use of hepC + kidneys?
- Utilize the pre-transplant education process to inform recipients about how hepC is managed post Transplant?
- Identify and develop unique strategies to continue improving socioeconomic barriers to kidney transplant?
- Improve patient readiness for kidney transplant?

Presentation by Guest Expert

Bonnie Lonze, MD
Transplant Surgeon
NYU Langone



Q&As – 5 Minutes



Case Study

Laura Gonzalez LCSW, NSW-C
Social Work Services Manager
Satellite Healthcare, Inc. Home office





Challenges to transplant referral

1. Communication – Spanish speaking
2. Insurance – Medi-Cal only, frequent renewal
3. Legal - Undocumented
4. Social Support – None locally
5. Financial - Supports children in Guatemala.
6. Transportation – Uses public transportation.
7. Employment – on and off
8. Mental Health - frequent low KDQOL scores in Burden of Kidney Disease -declines mental health referrals.

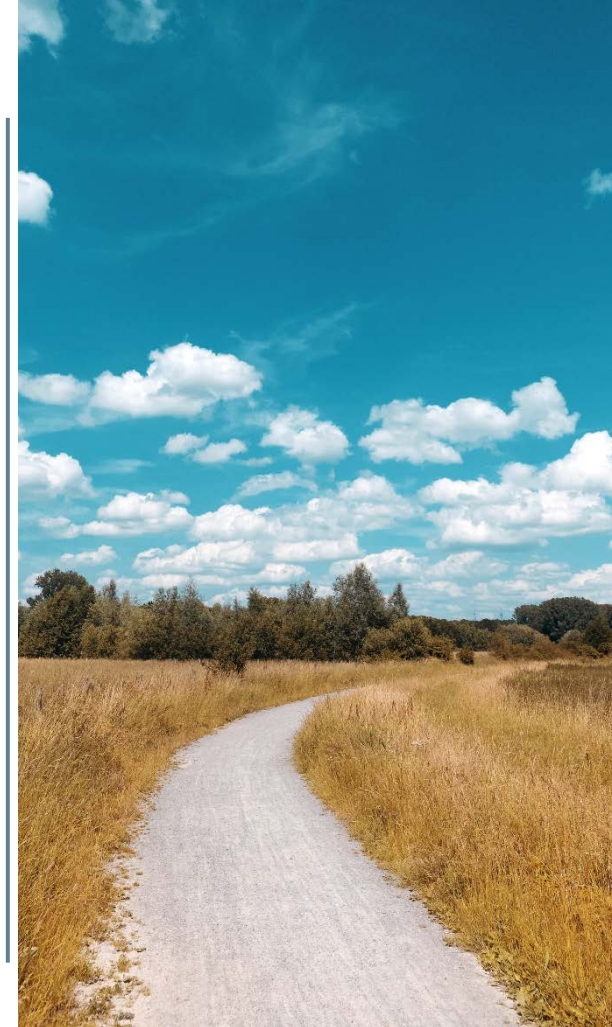


Psychosocial Strengths

- Strong family connection - as of 2020 – Wife and younger daughter moved to the US and living with patient.
- Employment – continually finds work
- Communicates and accomplishes goals;
 - *work, transplant, being with family*
- Independent; determined
- Physically active; walks to and from the bus

Transplant Journey

- Referred to transplant in 2014 –
 - no insurance; requisite to be listed
- Obtained Medi-Cal –
 - Annual renewals challenging due to language
- 9/2014 – Listed for transplant; inactive
- 2020; remained inactive
- 2021; testing required:
 - cardiology, colonoscopy, CRX, EKG, echo, angiography, ab/pelvic CT
 - 5/2022 last test to complete – colonoscopy
- Ready for transplant????



A vertical photograph on the left side of the slide shows a hand holding a pen, writing on a checklist in a notebook. The checklist has several items with checkboxes, some of which are marked. The background is a light blue and white grid pattern.

Plan of care

Intensive Case Management by SW –

- Assisting to schedule medical testing
- modeling, coaching, providing support/cheerleading
- Providing written instructions for testing/MD appointments in Spanish
- Contacting transplant center to ensure documents received
- Checking –in frequently with patient re: upcoming appointments, needs or barriers
- Communicating with IDT for ongoing collaboration to ensure optimal health for transplant

Thank you

The logo for Satellite Healthcare, featuring the word "SATELLITE" in a serif font with a thin white arc above it, and the word "HEALTHCARE" in a sans-serif font below it.

SATELLITE
HEALTHCARE

Q&As – 5 Minutes



Questions to Run On -- Revisited

How Might We ...

- Educate differently to increase the use of hepC + kidneys?
- Utilize the pre-transplant education process to inform recipients about how hepC is managed post Transplant?
- Identify and develop unique strategies to continue improving socioeconomic barriers to kidney transplant?
- Improve patient readiness for kidney transplant?

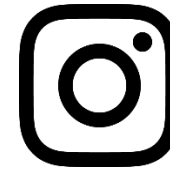
Recap & Next Steps

- Top take-aways
- I like, I wish, I will
- Additional pathways for learning
- Event evaluation

Social Media



ESRD National Coordinating Center



@esrd_ncc



@esrdncc



ESRD NCC | End Stage Renal Disease
National Coordinating Center (NCC)



Expert Teams – Case-Based Learning & Mentorship

Thank You

Julie Moss

jmoss@hsag.com

813-865-3125

This material was prepared the End Stage Renal Disease National Coordinating Center (ESRD NCC) contractor, under contract with the Centers for Medicare & Medicaid Services (CMS), an agency of the U.S. Department of Health and Human Services. The contents presented do not necessarily reflect CMS policy nor imply endorsement by the U.S. Government. Publication Number FL-ESRD NCC-NC1TDV-01192022-01

