

Expert Teams – COVID

Case-Based Learning & Mentorship

Thursday, October 14, 2021

Facilitator: Kelly M. Mayo, ESRD National Coordinating Center



Meeting Logistics

- Call is being recorded and will be posted to www.esrdncc.org
- Lines will be open for all high performing organizations
 - Please stay on mute unless you are speaking
 - Do not place the call on “hold”
- Everyone is encouraged to use the video and chat features



Meeting Guidelines



INTRODUCE YOURSELF
BEFORE SPEAKING



KEEP PATIENT-SPECIFIC
INFORMATION
CONFIDENTIAL



BE WILLING TO SHARE
SUCSESSES AND
DIFFICULTIES



BE OPEN TO FEEDBACK



ASK THE DIFFICULT
QUESTIONS



RESPECT OTHERS



USE "...AND" STATEMENTS



KEEP TO TIME LIMITS

Introductions

- Meeting Focus – Home Dialysis
- Guest Expert –
 - Donald Molony, MD, University of Texas Health (TX)
- Case Study Presenter –
 - Ruby Hartford, PhD, MSN, RN, Atlantis Health Care Group (PR)
 - Audrey Brezak, Washington State Department of Health (WA)
- High Performing Organizations
- ESRD Networks
- Centers for Medicare & Medicaid Services (CMS)



What are Expert Teams?

- A group made up of individuals from different high performing organizations, each with their own deep experience and knowledge
- Help others learn faster by sharing what worked (and what didn't work) in their organization
- Bring the best possible solutions to the table
- Continually learn and improve



COVID-19 in the ESRD Community

- Educate and manage the incidence of COVID-19
- Increase the number of dialysis patients receiving COVID-19 vaccinations
- Increase the number of dialysis facility staff receiving COVID-19 vaccinations
- Decrease the number of COVID-19 hospitalizations



Presentation by Guest Expert

Donald Molony, MD

Professor of Medicine

Distinguished Teaching Professor of the University of Texas System

Division of Renal Diseases and Hypertension AND

Center for Clinical Research and Evidence-based Medicine

McGovern Medical School University of Texas, Houston, TX



Q&As – 5 Minutes



Case Study #1



**COVID-19 Vaccination Case
Study Puerto Rico**

October 14, 2021



Background

Atlantis Healthcare Group Puerto Rico, Inc. (Atlantis)

Atlantis, headquartered in Trujillo Alto, Puerto Rico, has 16 dialysis facilities strategically located throughout the island, and provides services to one third of the ESRD population.

- Comprehensive Chronic Disease Management Program
- Three state of the art training centers



Vaccination Analysis

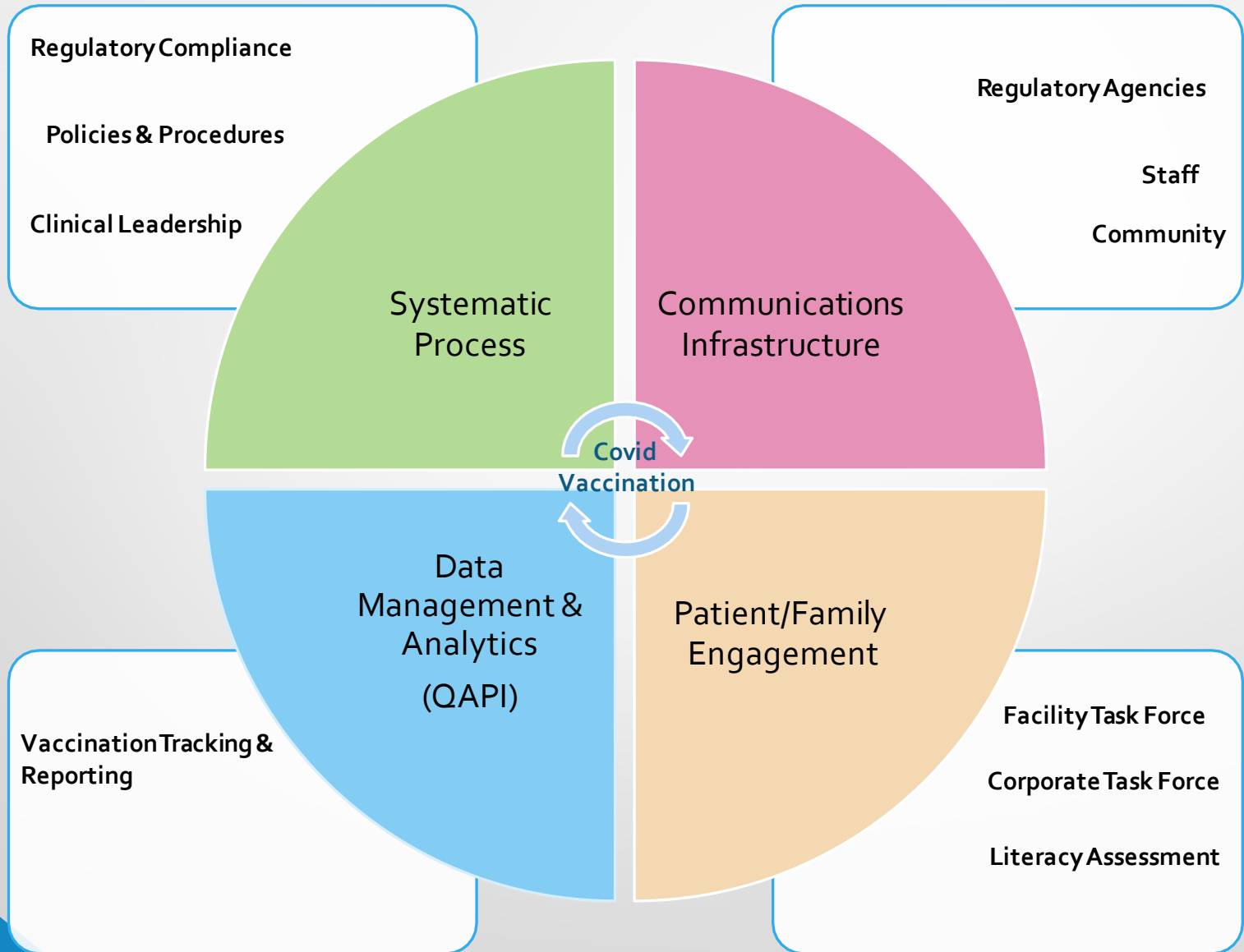
Employee Vaccination		
Unit	Total Employee complete vaccination series	Booster
Agua dilla	100%	17%
Caguas	97%	16%
Carolina	96%	23%
Dorado	90%	38%
Fajardo	100%	3%
Guayama	100%	55%
Guaynabo	100%	3%
Isabela	92%	80%
Juncos	97%	24%
Lares	100%	4%
Manati	98%	33%
Mayaguez	100%	54%
Ponce	100%	91%
San German	100%	20%
San Sebastian	100%	38%
Toa Baja	98%	26%
CDM Program	100%	25%
Acute Program	100%	100%
Corporate	99%	30%
Grand Total	98%	36%

January to October 2021:
 n=665 Total Population
 n=653 Vaccinated Population

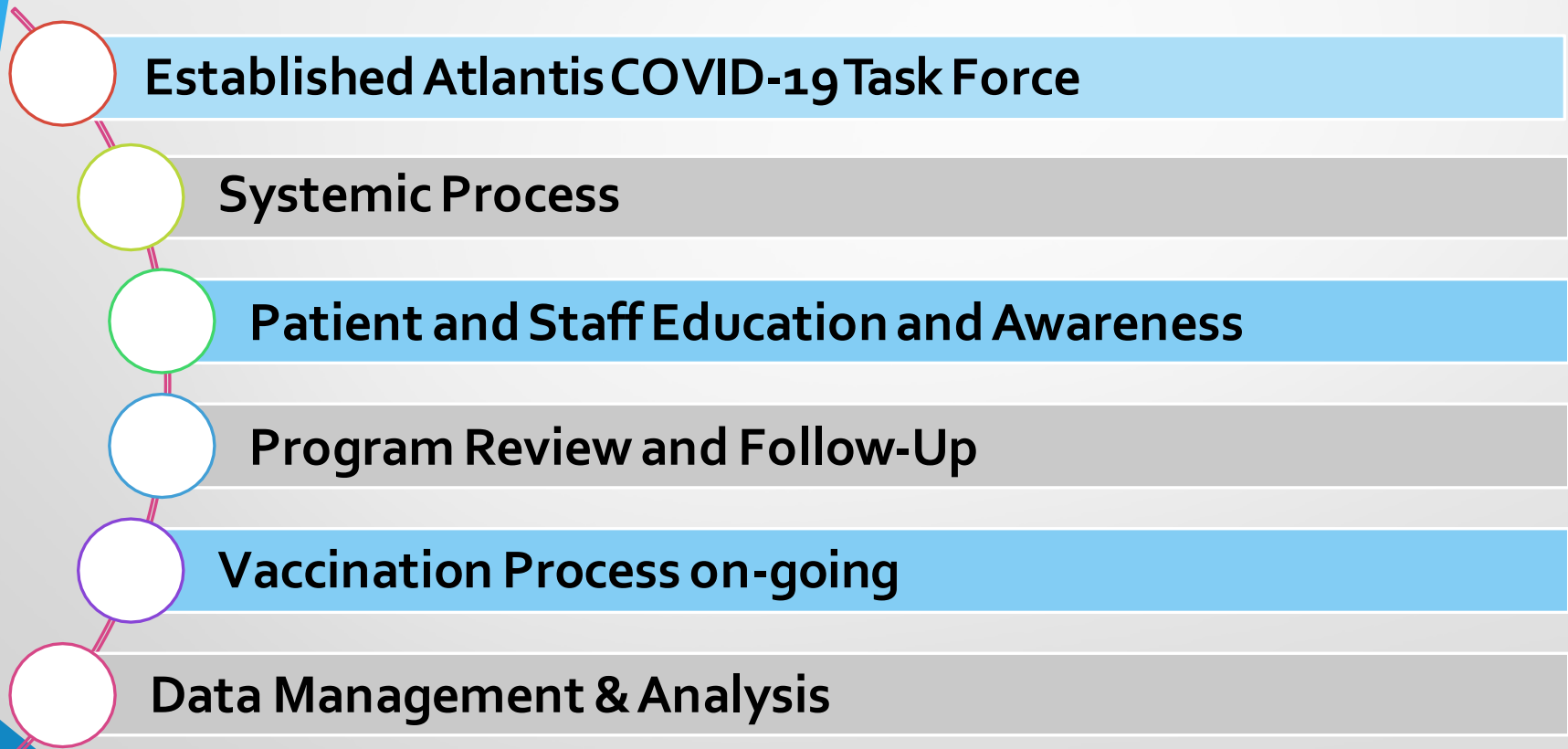
Patient Vaccination		
Unit	Total patients' complete vaccination series	Third Dose
Aguadilla	95%	83%
Caguas	94%	59%
Carolina	96%	11%
Dorado	87%	45%
Fajardo	87%	75%
Guayama	100%	88%
Guaynabo	98%	81%
Isabela	99%	83%
Juncos	85%	73%
Lares	97%	47%
Manati	93%	79%
Mayaguez	97%	76%
Ponce	98%	92%
San German	98%	84%
San Sebastian	96%	83%
Toa Baja	94%	82%
Grand Total	95%	71%
Total Patient With First Dose	1%	
Total Patients Not Vaccinated	4%	

January to October 2021:
 n=2203 Total Population
 n=2086 Vaccinated Population

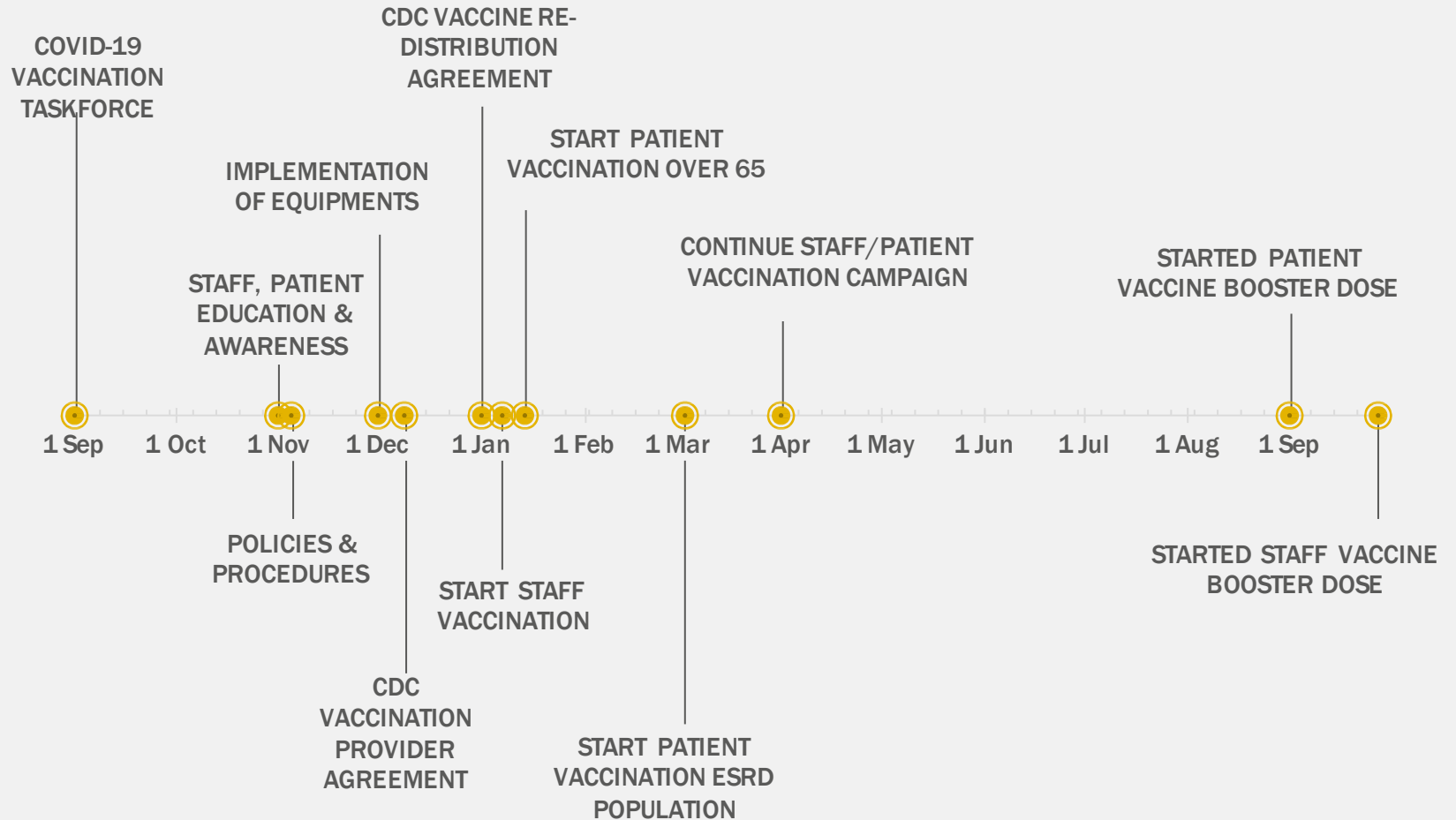
Interventional Highlights



Vaccination Operational Infrastructure



Timeline





?

Q&As – 5 Minutes



Case Study #2

Outpatient COVID-19 Investigation

Audrey Brezak, Epidemiologist

WA State Department of Health

Barbara Dommert-Breckler, Quality Improvement Director

Comagine Health/ ESRD Network 16

The Beginning

- March 01, 2020 ESRD Network was notified that an ESRD patient had passed due to COVID-19
- The first information/guidance on COVID-19 was distributed to dialysis providers on March 02, 2020.
- Network staff joined state, county and Health and Human Services/Centers for Disease Control (CDC) list serves and monitored guidance to communicate to dialysis providers and dialysis/kidney transplant patients. Updated contact list for EOC/ESF8, local coalitions and other local/national resources were updated and distributed.

Outpatient Dialysis COVID-19 Outbreak Investigations

- To our surprise, public health investigations did not identify COVID transmission within outpatient dialysis settings
 - Testament to strong infection prevention and control practices
- Quickly developed public health – dialysis/ESRD network partnerships
 - COVID investigations & transparency with weekly line lists
 - Organizational approaches to cohorting
 - Forums - education and guidance
- Ongoing challenges in vaccine acceptance and uptake

State and ESRD Network Collaborations

- Outbreak investigations from either Network or State data
- Partnering to enroll dialysis providers as COVID-19 vaccine providers
- Sharing of educational resources for both staff and patients
- Partnering to ensure COVID-19 vaccination supply

Questions?

Q&As – 5 Minutes



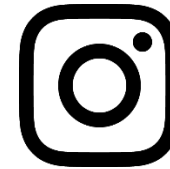
Recap & Next Steps

- Top take-aways
- I like, I wish, I will
- Additional pathways for learning
- Event evaluation

Social Media



ESRD National Coordinating Center



@esrd_ncc



@esrdncc



ESRD NCC | End Stage Renal Disease
National Coordinating Center (NCC)



Expert Teams – Case-Based Learning & Mentorship

Thank You

Kelly M. Mayo
kmayo@hsag.com
813-865-3552

This material was prepared the End Stage Renal Disease National Coordinating Center (ESRD NCC) contractor, under contract with the Centers for Medicare & Medicaid Services (CMS), an agency of the U.S. Department of Health and Human Services. The contents presented do not necessarily reflect CMS policy nor imply endorsement by the U.S. Government. Publication Number FL-ESRD NCC-NC1TDV-09232021-01

