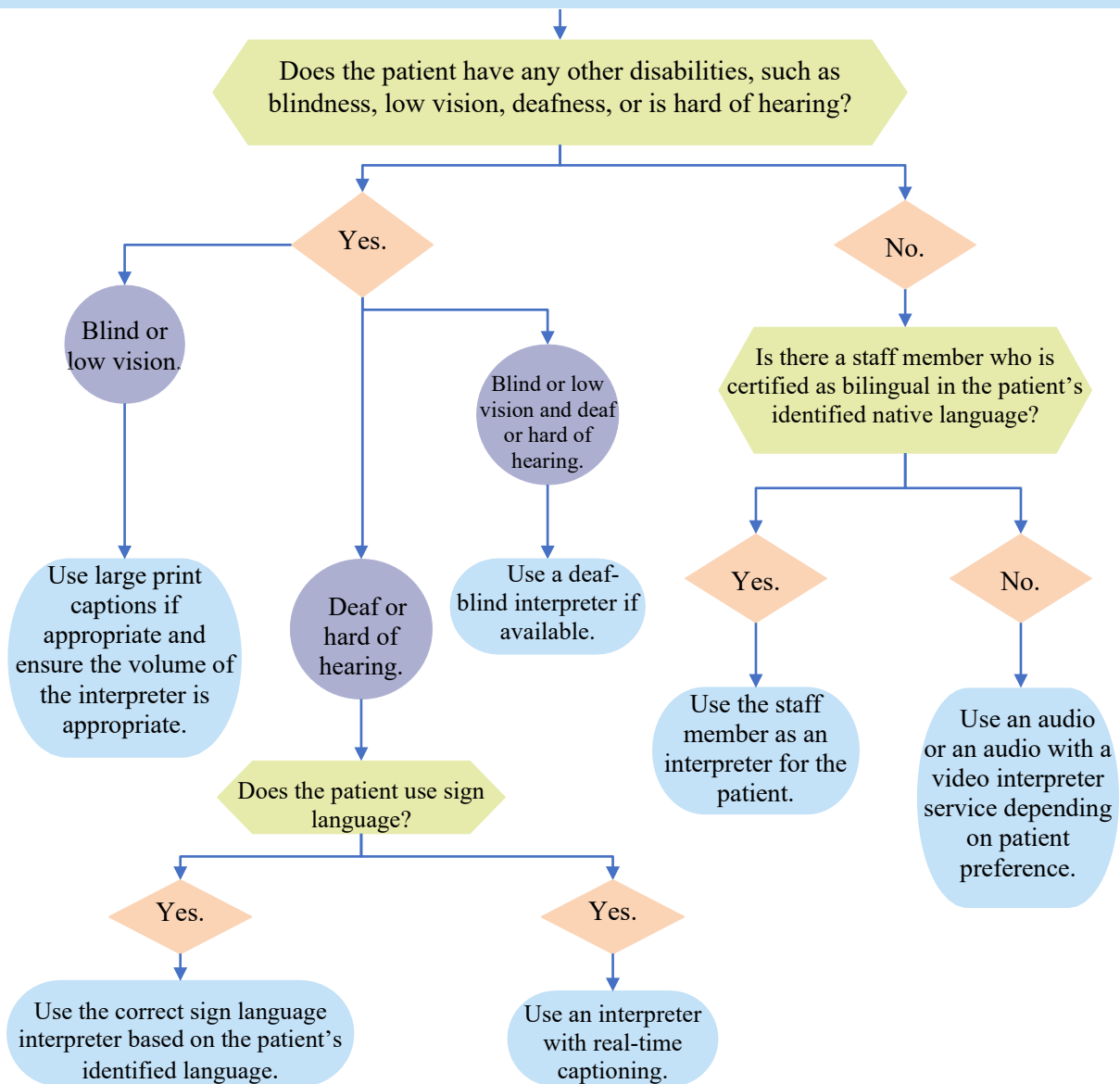




Guide to Using Interpretive Services

Patients with End-Stage Renal Disease (ESRD) have a variety of preferred languages.¹ This document serves as a comprehensive guide for using interpretive services, which are essential to fostering inclusive communication, ensuring accessibility, and bridging linguistic and cultural gaps.

Perform a language assessment using “I speak” cards to identify the patient’s native language.



1. Social Security Administration. Social Security Administration (SSA) Quarterly Data for Spoken Language Preferences End-Stage Renal Disease (ESRD) Medicare Initial Claims. 2023. Available at: <https://www.ssa.gov/open/data/LEP-Quarterly-Spoken-Language-ESRD-Medicare-Claims.html>. Accessed on: May 9, 2024.